



Performance Ratio and Loss Analysis for a Grid-Connected Solar Photovoltaic System: Case of the 7MW Plant in Malbaza, Niger

**Boubacar Maikano Abdoulaye^a,
Daouda Abdourahimoun^a, Sani dan Nomao Harouna^a,
Madougou Saidou^a and Boukar Makinta^{a*}**

^a *Physics Department, Laboratoire d'Energétique, d'Electronique, d'Electrotechnique, d'Automatique
et d'Informatique Industrielle (L3EA2I), Abdou Moumouni University, Niamey, Niger.*

Authors' contributions

This work was carried out in collaboration among all authors. All authors read and approved the final manuscript.

Article Information

DOI: 10.9734/JENRR/2023/v13i1256

Open Peer Review History:

This journal follows the Advanced Open Peer Review policy. Identity of the Reviewers, Editor(s) and additional Reviewers, peer review comments, different versions of the manuscript, comments of the editors, etc are available here: <https://www.sdiarticle5.com/review-history/96004>

Original Research Article

Received: 22/11/2022
Accepted: 30/01/2023
Published: 06/02/2023

ABSTRACT

The use of solar energy in sunny countries is an efficient way to overcome the energy shortage. The interest of this energy is not only economic but also environmental, as it emits few greenhouse gases. Niger, a vast landlocked country in the Sahel, is characterized by an average sunshine duration of 8.5 hours per day and an estimated average level of sunshine of around 5 to 7 kW/m² per day. However, the rate of access to electricity in Niger remains very low. To address this problem, a 7MW solar photovoltaic power plant has been built by the State of Niger in the town of Malbaza. It is composed of monocrystalline photovoltaic panels and injects its energy into the

*Corresponding author: E-mail: makintab@yahoo.fr;

national grid. The objective of this study is to compare the performance ratio determined by measurements with that obtained by simulation under PVsyst in order to evaluate its efficiency. The study is based on annual energy production data, recorded at the site, from 1 January 2021 to 31 December 2021. The annual average values of the global irradiation of the site, the energy produced by the system and the energy injected into the grid are respectively 249.86kWh/m², 1225.25MWh and 972.62MWh; those of the ambient temperature and the performance ratio (PR) are respectively 29.78°C and 0.795. The global losses caused by meteorological phenomena and those linked to the technologies of the various components of the system are evaluated at 20.10%.

Keywords: Solar PV system; performance ratio; grid connected system; reference yield.

1. INTRODUCTION

The energy situation in Niger is characterised by limited access of the population to the various forms of modern energy. The rate of access to electricity in Niger for the year 2018 is approximately 13% (National Electricity Access Strategy, 2018). In Niger, the average duration of insolation is 8.5 hours/day and the average power received is between 5 and 7 kW/m²/day [1,2]. To address the problem of access to electricity, a 7MW solar photovoltaic power plant has been built by the State of Niger in the town of Malbaza. The aim of this work is to study the performance ratio of this plant and to compare it with the one obtained from the simulation results. The theoretical model was implemented using PVsyst software. Several studies have shown that this software gives a good estimation of meteorological and electrical data [3-8].

2. MATERIALS AND METHODS

The site of the solar photovoltaic power plant in Malbaza has the following geographical coordinates : longitude 5.52° E, latitude 13.97° N and altitude 325 m. It occupies an area of 45 hectares. Fig. 1 shows the synoptic diagram of the Malbaza solar power plant [9].

The PV array is divided into two blocks : Block 1, which has a peak power of 4 MW and Block 2, a power of 3 MW. The output of both blocks is fed into a 20 kV busbar, after conversion via inverters. Table 1 summarizes the plant components. The characteristics of the solar PV modules and inverters installed in this power plant are given in Tables 2 and 3.

The energy produced by the panels is fed into the electricity grid (Fig. 1). Solar PV panels have a low energy yield. It is therefore necessary to transfer the energy produced to the grid with the

least amount of loss. To achieve this, the following parameters must be eliminated : shade, dust, rain, and excess heat.. These environmental factors cause losses in the PV system and further losses occur in system components such as cables, inverters and transformers [10,11].

The International Electrotechnical Commission standard (IEC-61724) specifies the set of measures proposed for the evaluation of PV installations (PR, Y_f, Y_r...). The performance ratio PR is determined by the equation1 [12-15].

$$PR = \frac{Y_f}{Y_r} (\%) \quad (1)$$

Where :

Y_f : refers to the final yield of the system and Y_r : refers to the reference yield. These two yields are given by equations (2) and (3) :

$$Y_f = \frac{E_{ac}}{P_o} (h/d) \quad (2)$$

$$Y_r = \frac{I_{p0}}{G_o} (h/d) \quad (3)$$

Where :

P_o is the peak power of the plant (7MW) and G_o = 1kW/m²; I_{p0} (kW/m²): plane of array irradiance ; E_{ac} (kW.h) : energy output ; h/d : hour per day.

3. RESULTS AND DISCUSSION

3.1 Interpretation of Results

The simulation result at the design phase of the Malbaza plant, in terms of monthly performance indicators, is summarized in Table 4 [16].

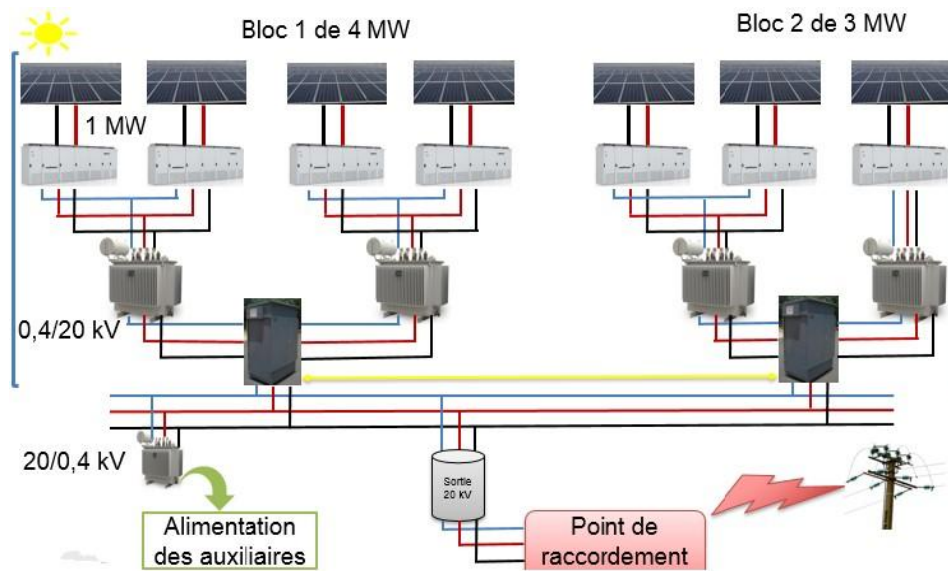


Fig. 1. Architectural plan of the power plant

Table 1. Summary of plant elements

| Equipment | Block 1 | Block 2 | Total |
|----------------------------|---------|---------|--------|
| Main transformer | 2 | 2 | 4 |
| Inverter | 4 | 3 | 7 |
| Photovoltaic module | 12,096 | 9135 | 21,231 |
| String Combiner (SCB) | 24 | 19 | 43 |
| Photovoltaic panel support | 288 | 218 | 506 |

Table 2. Characteristics of the PV module

| Parameter | Value and unit |
|-----------------------------|--------------------------|
| Maximum power (Pmax) | 330 Wc |
| Maximum power voltage (Vmp) | 36.55 Vdc |
| Maximum power current (Imp) | 9.03 A |
| Open circuit voltage (Voc) | 45.60 V |
| Short circuit current (Isc) | 9.40 A |
| Maximum system voltage | 1000 Vdc |
| Ground | 22.50 kg |
| Dimensions | 1960*990 mm ² |
| Number of cells per module | 96 |

Table 3. Inverter specifications

| Parameter | Value |
|-------------------------|-------------|
| Max. efficiency | 98.80 % |
| Weight | 2 600 kg |
| Total number installed | 7 |
| Input variables | |
| Max DC power | 1 200 kWc |
| DC MPPT voltage range | 600-850 Vdc |
| Max DC voltage | 1 000 V |
| Max DC current | 1 710 A |
| Output variables | |
| AC rated power | 1 000 kW |
| AC rated voltage | 400 V |
| AC rated current | 1 445 A |
| Frequency | 50Hz |

Table 4. Main annual results for one year

| | Ir-GlobHor | Ir-Diff-Hor | Tamb | Ir-GlobInc | Ir-GlobEff | E_{pv} | Eac | Y_f | Y_R | PR |
|-------------|-------------------|--------------------|--------------|-------------------|-------------------|-----------------------|--------------|----------------------|----------------------|--------------|
| January | 167,8 | 52.86 | 24.06 | 187.1 | 177.0 | 1105 | 1067 | 152,43 | 187,10 | 0.814 |
| February | 176.4 | 49.58 | 27.12 | 190.7 | 181.2 | 1110 | 1071 | 153,00 | 190,70 | 0.802 |
| March | 203.1 | 73.34 | 31.26 | 210.7 | 199.4 | 1204 | 1163 | 166,14 | 210,70 | 0.788 |
| April | 200.5 | 80.83 | 34.45 | 199.8 | 188.6 | 1127 | 1089 | 155,57 | 199,80 | 0.778 |
| May | 196.8 | 89.29 | 34.94 | 190.5 | 179.2 | 1075 | 1038 | 148,29 | 190,50 | 0.778 |
| June | 189.6 | 84.76 | 32.17 | 181.0 | 169.9 | 1036 | 1001 | 143,00 | 181,00 | 0.789 |
| July | 183.7 | 87.75 | 29.87 | 176.7 | 165.7 | 1023 | 987 | 141,00 | 176,70 | 0.797 |
| August | 180.8 | 96.51 | 28.45 | 178.0 | 166.8 | 1039 | 1003 | 143,29 | 178,00 | 0.805 |
| September | 184.8 | 81.15 | 29.60 | 188.2 | 177.3 | 1090 | 1053 | 150,43 | 188,20 | 0.799 |
| October | 192.9 | 65.60 | 31.55 | 205.4 | 194.4 | 1175 | 1136 | 162,29 | 205,40 | 0.789 |
| November | 174.8 | 45.49 | 28.32 | 194.7 | 184.1 | 1124 | 1085 | 155,00 | 194,70 | 0.796 |
| December | 164.5 | 45.97 | 25.45 | 186.5 | 175.8 | 1089 | 1051 | 150,14 | 186,50 | 0.805 |
| Year | 2215.8 | 853.14 | 29.78 | 2289.3 | 2159.6 | 13197 | 12746 | 151,71 | 190,78 | 0.795 |

Thus, the values of global irradiation, ambient temperature, energy and performance ratio are estimated at 2215.8 kWh/m², 29.78°C, 13,197 MWh and 0.797 respectively.

The simulation results show a slight variation in the value of the performance ratio over the 12 months of the year. It ranges from 77.8% in April-May to 81.4% in January. This result also means that 21% of the insolation is not converted into useful energy and is therefore lost. The energy loss diagram predicting various losses by the PVsyst software is presented in Fig. 2. The annual global horizontal irradiation received by the PV system is estimated to be 2216 kWh/m². Due to shading, soiling loss factor and IAM (Incidence Angle Modifier) factor, the effective irradiation on the collectors is 2160 kWh/m². After converting the PV irradiance by 17.07%, the nominal energy to the grid is 15,181 MWh. Furthermore, after losses due to irradiation level (-0.6%), temperature (-10.4%) and inverter (-1.7%), the resulting energy sent to the grid is 12,745 MWh per year. Table 5 summarizes the expected system losses.

The analysis of actual production data for the year 2021 indicates a variation in the performance ratio, depending on the month:

- 60.82%, in the months of April-May: minimum ;
- 78.27%, in January: maximum, (Fig. 3).

3.2 Comparison between Simulated and Measured PR

The performance ratio (PR) is one of the most important parameters to evaluate the photovoltaic installation efficiency. It refers to the ratio between the actual energy yield and the Most possible energy yield [17,18]. Fig. 4 shows the comparison between the simulated and measured PR. From the observation of this figure, it can be seen that the performance ratio becomes lower in the experimental result than in the simulated, notably, during the hottest months in Niger (60.83%), April and May. In January, the highest PR values are observed: experimentation (78.27%) and simulation (81.4%). Apart from April-May and November-October, there is good agreement between the measured and simulated PR.

We have correlated the PR obtained from the measurements with those obtained from the simulation. The representation is given in Fig. 5. The value of the R² coefficient found is about 58% which indicates a good correlation between the experimental and simulated values. It should be noted that the most scattered points of simulated PR of the system are due to high losses in the converters, the unavailability of the power plant and the presence of moving clouds that cause a sudden drop in radiation.

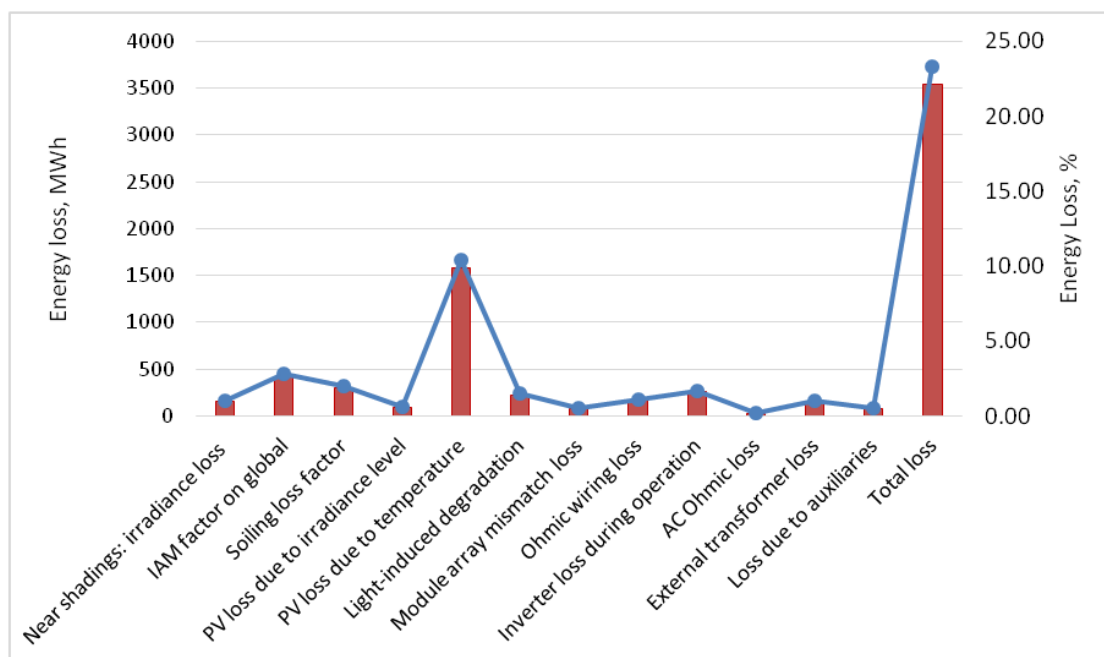


Fig. 2. System loss diagram

Table 5. Predicted system losses

| | Losses | Value |
|---|--|----------------|
| 1 | Irradiation level losses | -2.50% |
| 2 | Temperature losses | -10.40% |
| 3 | PV Conversion Losses | -3.80% |
| 4 | Conversion losses in the inverter (DC to AC) | -1.70% |
| 5 | Losses in transformers and auxiliaries | -1.70% |
| 6 | Total | -20.10% |

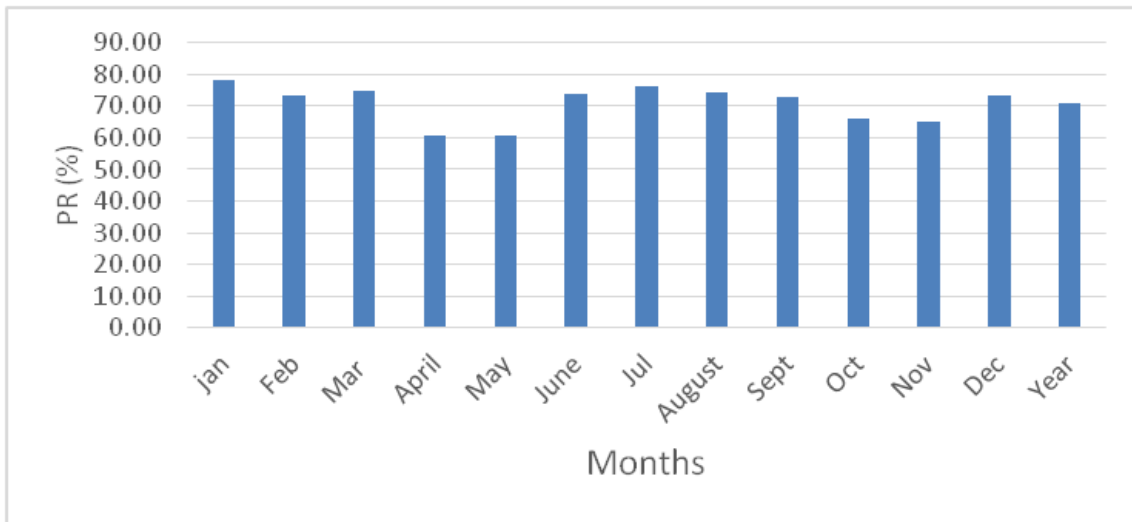


Fig. 3. PR values determined by the measurements

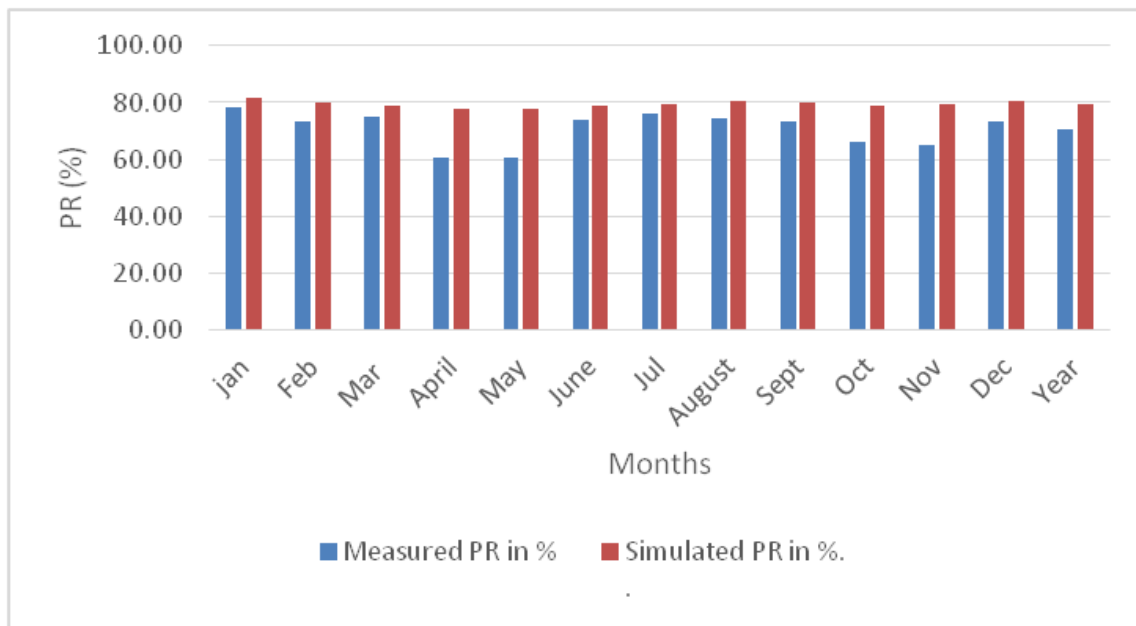


Fig. 4. Comparison between measured PR and simulated PR

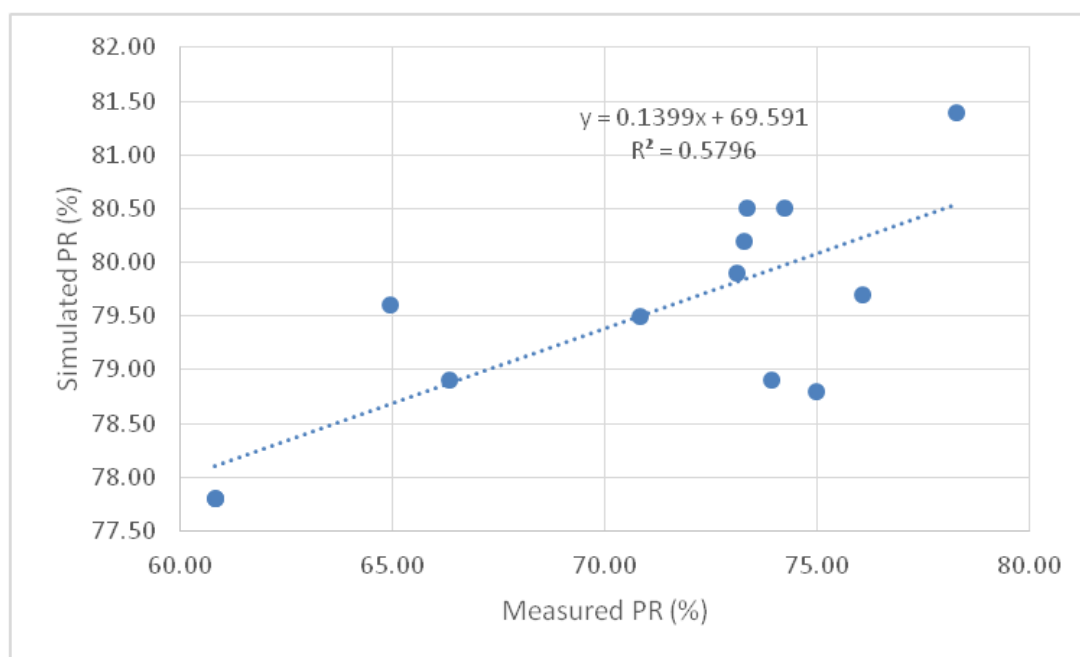


Fig. 5. Correlation between measured PR and simulated PR

4. CONCLUSION

The data recorded along the year 2021 allowed to compare the performance ratio of the 7 MW solar PV system connected to the national grid in Niger. On average, the measured and simulated performance ratio values are respectively 70.84% and 79.5%. These two values show us that the performance of the solar PV system presented in our case study is quite acceptable, but it is still lower than its simulated value. This decrease can be justified by the fact that the grid is not 100% available, the temperature variation, the presence of clouds that block and the conversion losses.

ACKNOWLEDGEMENTS

The authors would like to thank IBRAHIM MAMAN Abdouramane and ASSARID ISSAKA Abdoulkarim for their kind availability and for providing access to the data.

COMPETING INTERESTS

Authors have declared that no competing interests exist.

REFERENCES

1. Abdoulkarim AI, Seibou B, Soumaila NT, Saidou M. Empirical models for estimating

- global solar radiation at the site of the 7-MW photovoltaic solar power plant in Malbaza (Niger). *Journal of Scientific and Engineering Research*. 2020;7(7):45-54.
2. Issaka Abdoulkarim A, Seibou B, Nabil A, Talibi Soumaila N, Saidou M. Analysis of electrical disturbances on the operation of the 7-MW photovoltaic solar power plant connected to the Malbaza electricity grid (Niger). *Int J Adv Res*. 2020;8(9):169-80. Doi: 10.21474/IJAR01/11647
3. Abdoulkarim AI, Seibou B, Saidou M. Comparative study with pvsyst software of the energy production of the 7 MW. *International Journal of Recent Advances in Multidisciplinary Research*. August 2020;07(08):6157-61.
4. Dey D, Subudhi B. Design, simulation and economic evaluation of 90-kW grid connected Photovoltaic system. *Energy Rep*. 2020;6(November):1778-87. DOI: 10.1016/j.egy.2020.04.027
5. LIMEM F, SEZEN S. Comparative analysis of different photovoltaic simulation software: case study on analyzing the performance of a 5,1 kWp grid connected photovoltaic system. *Eur J Sci Technol*. 2022;32:816-26. DOI: 10.31590/ejosat.1040126
6. Umar NH, Bora B, Banerjee C, Umar N, Panwar BS. 'Study of different PV Technologies under Composite Climates using test beds at NISE View project Solar

- Photovoltaic Hub at BESU View project Comparison of different PV power simulation software: Case study on performance analysis of 1-MW grid-connected P,' No. [online]. 2018;11-24. Available from: <http://www.ijesi.org%7C%7CVolumewww.ijesi.org>.
7. Prasad BKK, Reddy KP, Rajesh K, Reddy PV. Design and Simulation Analysis of 12.4 kWp Grid Connected Photovoltaic system by using PVSYST Software. *Int J Recent Technol Eng.* 2020;8(5):2859-64. DOI: 10.35940/ijrte.E6243.018520
 8. Ahmad OA, Habeeb WH, Mahmood DY, Jalal KA, Sayed H. 'Design and performance analysis of 250-kw grid-connected photovoltaic system in iraqi environment using pvsyst software,' *Indones. J. Electr. Eng Inform.* 2019;7(3):415-21. DOI: 10.11591/ijeei.v7i3.978
 9. S. De Malbaza-niger. *Anal Tech Financ Centrale Solaire*; 2020.
 10. Hemanthbabu N, Shivashimpiger S, Samanvita N, Parthasarathy VM. Performance ratio and loss analysis for 20-MW grid connected Solar PV system – case study. 2019;2:20-5.
 11. Chandrika VS, Thalib MM, Karthick A, Sathyamurthy R, Manokar AM, Subramaniam U et al. Performance assessment of free standing and building integrated grid connected photovoltaic system for southern part of India. *Build Serv Eng Res Technol.* 2021;42(2):237-48. DOI: 10.1177/0143624420977749
 12. Amenyo Vehe M, Kwaku Amuzuvi C. Performance evaluation of the Navrongo Solar PV power plant in Ghana. *J Electr Electron Eng.* 2021;9(2):49. DOI: 10.11648/j.jeee.20210902.13
 13. Med YAHYA, MAHMOUD AK, DAHER DH, Gaillard L, Menezo C, Mellit A. Performance analysis of a 48kWp grid-connected photovoltaic plant in the Sahelian climate conditions of Nouakchott, Mauritania(February); 2021. DOI: 10.20944/preprints202102.0275.v1.
 14. Huang C, Edesess M, Bensoussan A, Tsui KL. Performance analysis of a grid-connected upgraded metallurgical grade silicon photovoltaic system. *Energies.* 2016;9(5). DOI: 10.3390/en9050342
 15. Saxena AK, Saxena S, Sudhakar K. Energy, economic and environmental performance assessment of a grid-tied rooftop system in different cities of India based on 3E analysis. *Clean Energy.* 2021;5(2):288-301. DOI: 10.1093/ce/zkab008
 16. Sterling, Wilson. Grid-Connected System: Simulation parameters Grid-Connected System: Simulation parameters (continued). Niger: Malbaza. 2017;1-5.
 17. Khalid AM, Mitra I, Warmuth W, Schacht V. Performance ratio – crucial parameter for grid connected PV plants. *Renew Sustain Energy Rev.* 2016;65:1139-58. DOI: 10.1016/j.rser.2016.07.066
 18. Cavalcante MM, De Souza Silva JL, Villalva MG, Lins MPF. Performance analysis of a Solar Photovoltaic Power Plant IEEE PES Conf. Innov Smart Grid Technol ISGT Lat Am; 2019. DOI: 10.1109/ISGT-LA.2019.8894937

© 2023 Abdoulaye et al.; This is an Open Access article distributed under the terms of the Creative Commons Attribution License (<http://creativecommons.org/licenses/by/4.0>), which permits unrestricted use, distribution, and reproduction in any medium, provided the original work is properly cited.

Peer-review history:
The peer review history for this paper can be accessed here:
<https://www.sdiarticle5.com/review-history/96004>